

Make Stuffed Animals with Cuddle®

Cuddle® and stuffed animals—a winning combination! Here are some tips to taking the mystery out of making these glorious, lovable creatures.

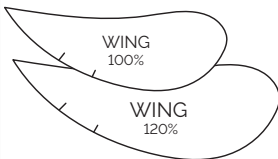
Here's how:



NUTTY NAG from RUSTIC HORSESHOE

1 Make it bigger!

Many plush toy patterns are easier to make if they are bigger. Enlarge pattern pieces individually.



Mark each piece with the new size, e.g., 120%.

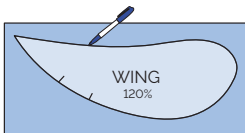
2 Stabilize your pattern pieces.

For stability and longevity, cover each pattern piece with laminating plastic or contact paper before cutting the individual paper pieces.

Note: Laminating plastic sheets can be found at most office supply stores.

3 Prepare the fabric pieces.

Trace each pattern piece onto the back of your Cuddle® with a felt tip marker. Transfer **all** markings.



Write the name of each piece on the back.

4 Control the Cuddle® dust!

For less mess, cut Cuddle® using a small micro-serrated scissors or a craft knife. A 28mm rotary cutter also works. Vacuum before moving the pieces.

For Luxe Cuddle®, toss cut pieces in a no-heat dryer with a damp washcloth for about 5 minutes to remove remaining Cuddle® dust.

Notions for Stuffies

RECOMMENDED PATTERN COMPANIES

- Funky Friends Factory | funkyfriendsfactory.com
- Melly & Me | mellyandme.com
- Rustic Horseshoe | rustichorseshoe.com
- Sew Desu Ne? | cholyknight.com

SAFETY EYES: suncatchercrafteyes.com

VIDEO TUTORIAL: Watch Sew Together

Tuesday's How to Make Super Soft Stuffed Animals. Scan the QR code or go to: youtube.com/watch?v=TOCNldNe_io&t=762s

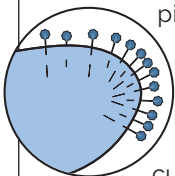


WASHING INSTRUCTIONS

- Prewash red and dark colors.
- For best results, wash finished projects in cool water with a gentle detergent.
- Do not use fabric softener or dryer sheets.
- Dry in a no-heat dryer or line dry.

5 Pin frequently.

Use long, flower head pins. Insert pins alternating from front-to-back and back-to-front to reduce distortion. Pin every ½" on curves; every inch on the straighter edges.



6 Sew the seams.

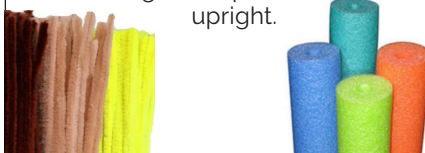
Sew seams using the seam allowance indicated on the pattern. Use polyester thread and a 2.5mm stitch length.

7 Choose your stuffing.

While there are many polyester fiberfills available, we highly recommend Fairfield: Silky Poly-Fil® for a soft squeezable animal and regular Fairfield Poly-Fil® for a more solid animal.

8 Stabilize the joints.

For joint stability, insert chenille stems or foam rollers into necks and/or legs while stuffing to keep upright.

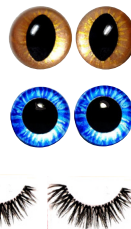


9 Add safety eyes.

Try using safety eyes from small manufacturers.

For children under age 2, machine or hand embroider the eyes.

Add fake eyelashes from a drug store for drama and femininity.



10 Sit up straight!

Fill small muslin pouches with Fairfield Poly Pellets® Weighted Stuffing Beads. Stitch the pouches closed.

Add it to the seat or the ends of the arms and legs of your stuffie. The weight helps them sit up straight.

